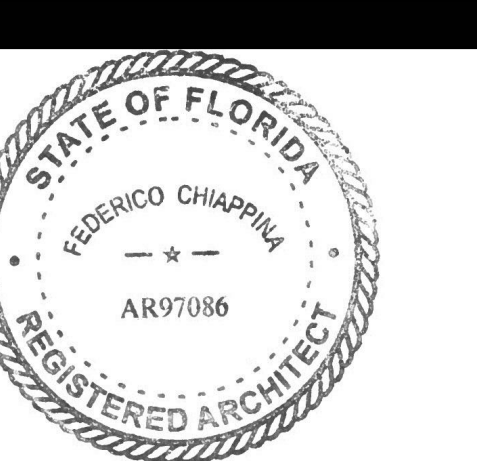


MACGREGOR ASSOCIATES ARCHITECTS

2727 Paces Ferry Road SE
Building Two, Suite 1400
Atlanta, Georgia 30339
T 770.432.9400 F 770.432.9934



11/05/18

CONSULTANT

PRINT RECORD

NUMBER	DATE	DESCRIPTION
1	11/05/18	ISSUE FOR PERMIT

PROJECT INFORMATION

A SPECULATIVE INVENTORY AND DISTRIBUTION FACILITY

WESTLAKE II

9779 PRITCHARD RD
JACKSONVILLE, FLORIDA,
32219

JOHNSON DEVELOPMENT ASSOCIATES, INC.

THIS DRAWING, AS AN INSTRUMENT OF SERVICE, IS AND SHALL REMAIN THE PROPERTY OF THE DESIGN PROFESSIONAL AND SHALL NOT BE REPRODUCED, PUBLISHED OR USED IN ANY WAY WITHOUT THE PERMISSION OF THE DESIGN PROFESSIONAL.

THE CONTRACTOR SHALL VERIFY ALL DIMENSIONS AND EXISTING CONDITIONS AT THE SITE BEFORE PROCEEDING WITH EACH PHASE OF HIS WORK.

© Macgregor Associates Architects, Inc. - 11/05/2018

DATE	PROJECT NO
11/05/18	2017-138

SHEET TITLE

OVERALL FLOOR PLAN

SHEET NUMBER

A-201

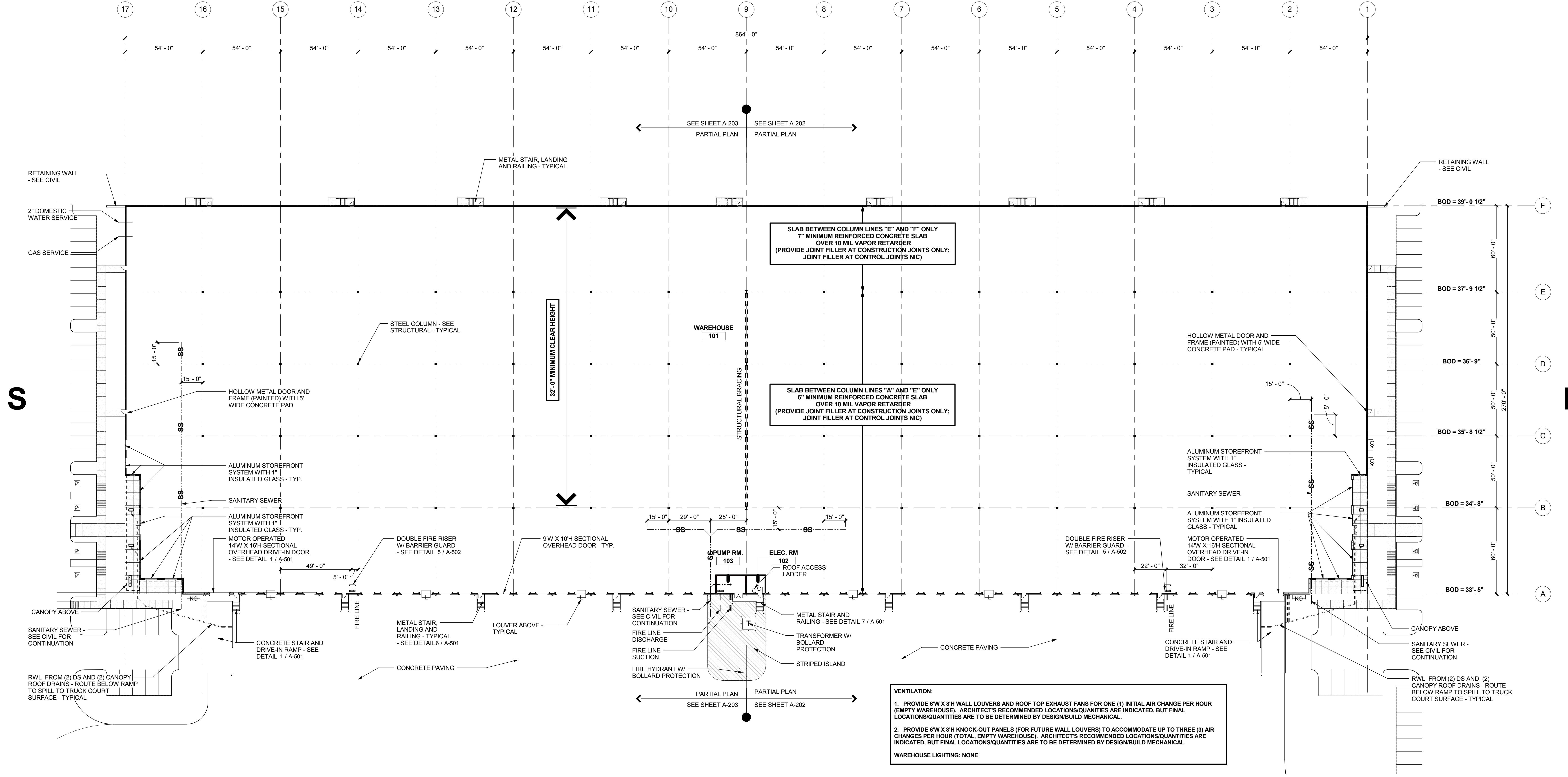
FOR CONSTRUCTION

W

S

N

E



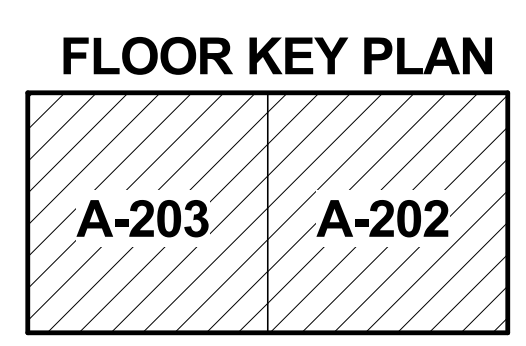
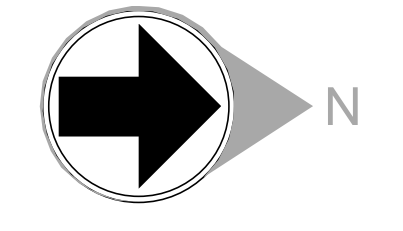
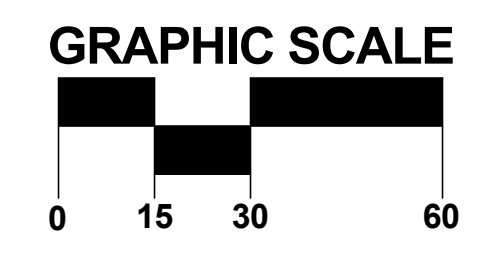
SLAB BETWEEN COLUMN LINES "E" AND "F" ONLY
7" MINIMUM REINFORCED CONCRETE SLAB
OVER 10 MIL VAPOR RETARDER
(PROVIDE JOINT FILLER AT CONSTRUCTION JOINTS ONLY;
JOINT FILLER AT CONTROL JOINTS NIC)

SLAB BETWEEN COLUMN LINES "A" AND "E" ONLY
6" MINIMUM REINFORCED CONCRETE SLAB
OVER 10 MIL VAPOR RETARDER
(PROVIDE JOINT FILLER AT CONSTRUCTION JOINTS ONLY;
JOINT FILLER AT CONTROL JOINTS NIC)

VENTILATION:

1. PROVIDE 6'W X 8'H WALL LOUVERS AND ROOF TOP EXHAUST FANS FOR ONE (1) INITIAL AIR CHANGE PER HOUR (EMPTY WAREHOUSE). ARCHITECT'S RECOMMENDED LOCATIONS/QUANTITIES ARE INDICATED, BUT FINAL LOCATIONS/QUANTITIES ARE TO BE DETERMINED BY DESIGN/BUILD MECHANICAL.
2. PROVIDE 6'W X 8'H KNOCK-OUT PANELS (FOR FUTURE WALL LOUVERS) TO ACCOMMODATE UP TO THREE (3) AIR CHANGES PER HOUR (TOTAL, EMPTY WAREHOUSE). ARCHITECT'S RECOMMENDED LOCATIONS/QUANTITIES ARE INDICATED, BUT FINAL LOCATIONS/QUANTITIES ARE TO BE DETERMINED BY DESIGN/BUILD MECHANICAL.

WAREHOUSE LIGHTING: NONE



1 OVERALL FLOOR PLAN

1" = 30'-0"

17/02/18 14:25:31 PM